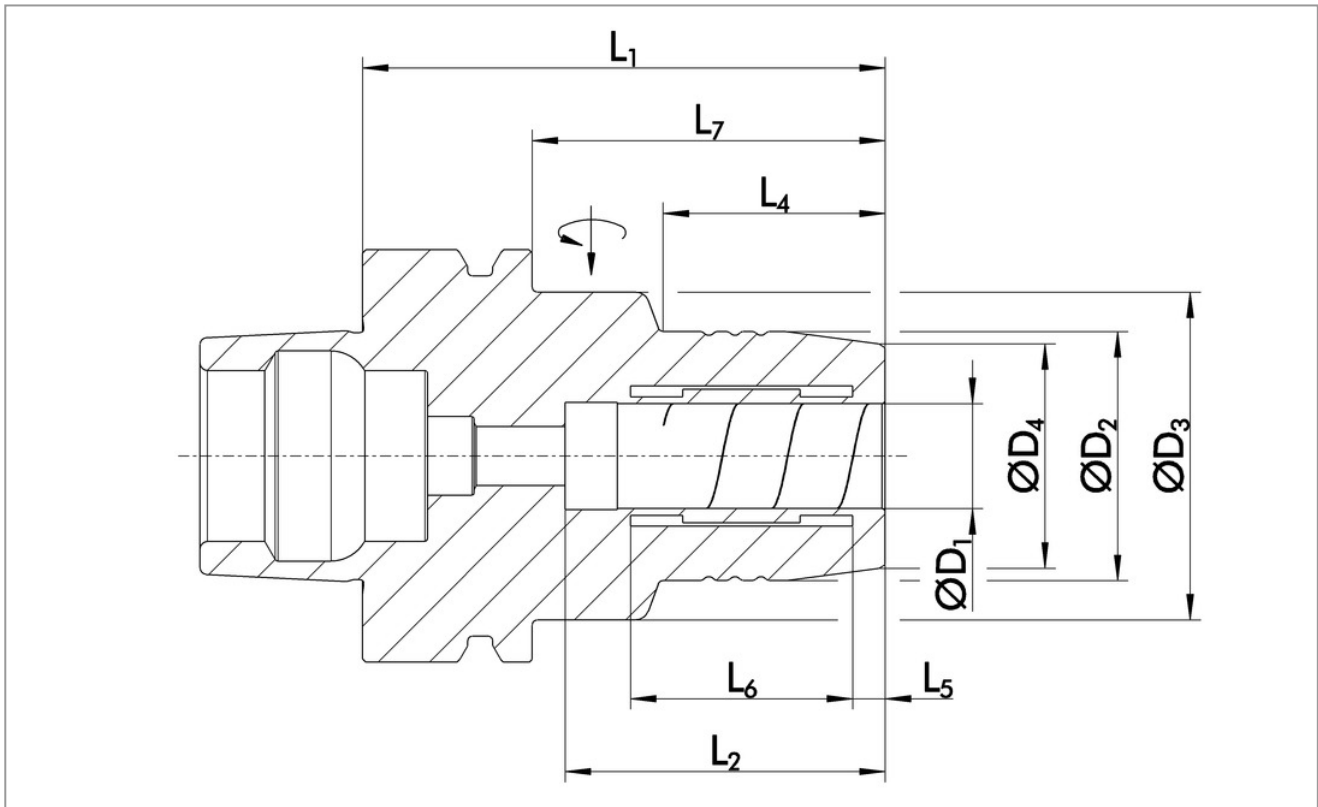


Hauptansicht

0206575 TENDO SDF HSK-F 63

Hauptansicht 0206575 TENDO SDF HSK-F 63 Ø16.0, L1=80.0 (PDF)



Bezeichnung	TENDO SDF HSK- F 63 Ø10.0, L1=80.0	TENDO SDF HSK- F 63 Ø12.0, L1=80.0	TENDO SDF HSK- F 63 Ø16.0, L1=80.0	TENDO SDF HSK- F 63 Ø20.0, L1=80.0	TENDO SDF HSK- F 63 Ø25.0, L1=90.0
D1	10.0 mm	12.0 mm	16.0 mm	20.0 mm	25.0 mm
D2	30 mm	32 mm	38 mm	52.5 mm	52.5 mm
D3	50 mm	50 mm	50 mm	52.5 mm	52.5 mm
D4	26 mm	28 mm	34 mm	48 mm	48 mm

L1	80 mm	80 mm	80 mm	80 mm	90 mm
L2	42.5 mm	46 mm	49 mm	51 mm	57 mm
L4	34 mm	34 mm	34 mm	54 mm	64 mm
L5	4 mm	4.5 mm	5 mm	5 mm	5.5 mm
L6	25 mm	30 mm	34 mm	36 mm	42 mm
L7	54.05 mm	54.05 mm	54.05 mm	54.05 mm	64.05 mm
Gewicht	1.1 kg	1.1 kg	1.1 kg	1.4 kg	1.4 kg